



Next

The Next Era at FHG ... Same Industry
Leading Genetics with New
& Improved Design!!

GENERATION

Flying H Focus 31Z



Top 1%
for Carcass

AGA# 1234510

Owned with Bar Arrow Cattle Company

Faris In Focus 7T X Atlas 712G

BD: 2/12/12 • Homo. Black, Homo. Polled • Balancer 75% GV

CE	BW	WW	YW	MK	CW	RE	MB	\$CV	\$FM
10	0.8	75	106	27	33	.39	.26	49.11	36.49

Lacy FHG Legacy 6097



Top 2%
for Ribeye

AMAR # 1148231

Make Mimi X Cherokee Canyon

BD: 9/09/06 • 100% AR • ID: 6097

CE	BW	WW	YW	MK	CW	RE	MB
5	0.9	72	105	18	33	.76	.56

Flying H Protégé 15W



Top 2%
for Carcass

AGA# 1113163

Owned with Rick Taylor

GAR EGL Protégé X Exclusive

BD: 1/14/09 • Homo. Black, Homo. Polled • Balancer 50% GV

CE	BW	WW	YW	MK	CW	RE	MB	\$CV	\$FM
15	-2.4	73	107	24	29	.77	.76	98.85	38.80

RCBF Beef Maker 102Y



Top 3%
for Carcass

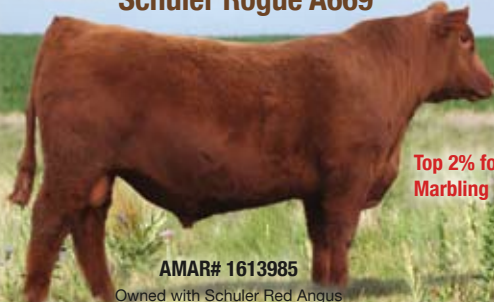
ASA# 2594879

WS Beef Maker R13 X O C C Just Right 619J

BD: 1/02/11 • Hetro. Black • Homo. Polled • 50% SM, 50% AN

CE	BW	WW	YW	MK	CW	RE	MB	API	TI
18.3	-1.9	71.1	109.6	22.6	32.3	.92	.65	168.7	86.5

Schuler Rogue A669



Top 2%
for Marbling

AMAR# 1613985

Owned with Schuler Red Angus

Schuler Rebel 0029X X Brown Commitment S7206

BD: 2/14/13 • 94% AR • ID: A669

CE	BW	WW	YW	MK	CW	RE	MB
11	-2.7	66	108	20	31	.05	.96

Flying H Professor 22W



Top 10%
for Carcass

AGA# 1108539

GAR EGL Protégé X Full Season

BD: 1/14/09 • Hetero. Black, Homo. Polled • Balancer 50% GV

CE	BW	WW	YW	MK	CW	RE	MB	\$CV	\$FM
12	-0.3	74	114	28	37	1.01	.43	75.86	44.34

Contact any FHG Team member about
Bulls, Females, or Semen for your program.



FLYING H GENETICS
Dick & Bonnie Helms

Kyle Helms 308.962.6940 • kyle@flyinghgenetics.com

Cody Helms 303.842.9071 • cody@flyinghgenetics.com

Jared Wareham 417.309.0062 • jared@flyinghgenetics.com